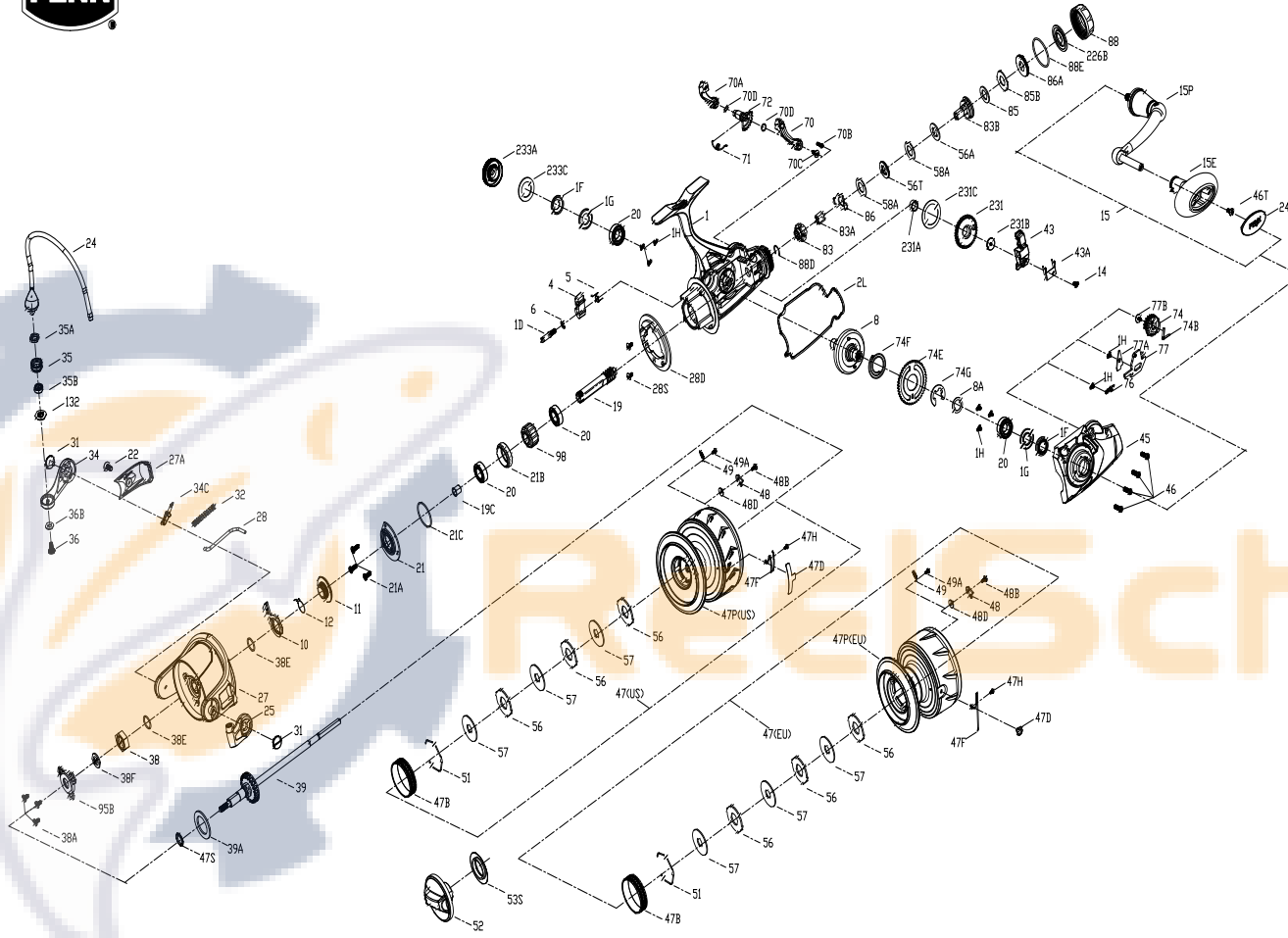




PARTS LIST FOR MODEL SSVII6500LL-US/SSVII6500LL-EU



KEY NO.	PART NO.	PENN STYLE NO.	DESCRIPTION
31	1277055	31-SSV5500	Screw
32	1389467	32-CLA6000	Bail Spring
34	1389468	34-CLA6000	Bail Arm
34C	1389469	34C-CLA6000	Pivot Arm
35	1457403	35-SLAI116500HS	Line Roller
35A	1457404	35A-SLAI116500HS	Line Roller Bushing
35B	1377606	35A-BTLI18000LC	Ball Bearing
36	1422399	36-SLA9500	Line Roller Screw
36B	1417809	36B-CLA6000	Bail Arm Screw Washer
38	1419051	38-SLA5500	Rotor Nut
38A	1119121	20C-7000AF	Screw
38E	1418958	38E-SLA3500	Pinion Gear Seal
38F	1419052	38F-SLA5500	Rotor-Main Shaft Seal
39	1494757	39-SSVI6500LL	Main Shaft Assembly
39A	1494758	39A-SSVI6500LL	Washer
43	1494759	43-SSVI6500LL	Slider
43A	1494760	43A-SSVI6500LL	Slider Guide
45	1494761	45-SSVI6500LL	Body Cover Assembly
46	1277074	46-SSV5500	Body Cover Screw
46T	1494762	46T-SSVI6500LL	Screw
47	1611028	47-SSVII6500LL-US	Spool Assembly
47	1612633	47-SSVII6500LL-EU	Spool Assembly
47B	1277076	47B-SSV5500	Spool Band
47D	1611026	47D-SSVII6500LL-US	Line Clip
47D	1494764	47D-SSVII6500LL-EU	Line Clip
47F	1611027	47F-SSVII6500LL-US	Line Clip Retainer
47F	1277080	47F-SSVII6500LL-EU	Line Clip Retainer
47H	1612635	47H-SSVII6500LL-US	Spool Click Spring Screw
47H	1294638	47H-CLA2000-EU	Spool Click Spring Screw
47P	1611029	47P-SSVII6500LL-US	Spool
47P	1612634	47P-SSVII6500LL-EU	Spool
47S	1494699	47S-SSVI2500LL	Seal
48	1385578	48-CLA3000	Spool Click Plate
48B	1385581	48B-CLA3000	Screw
48D	1385579	48D-CLA3000	Spool Clicker Spacer Ring
49	1385580	49-CLA3000	Spool Click Spring
49A	1341547	49A-SSV7500LC	Screw
51	1447925	51-CFTI15000	Drag Washer Retainer
52	1494766	52-SSVI6500LL	Drag Knob Assembly
53S	1447927	53S-CFTI15000	Drag Knob Seal
56	1339557	56-CLA5000	Drag Friction Washer
56A	1494767	56A-SSVI6500LL	Friction Washer
56T	1494768	56T-SSVI6500LL	Drag Washer
57	1339558	57-CLA5000	Keyed Drag Washer
58A	1494769	58A-SSVI6500LL	Eared Washer
70	1494770	70-SSVI6500LL	Lever Left
70A	1494771	70A-SSVI6500LL	Lever Right
70B	1277128	70B-SSV6500LL	Screw
70C	1277003	70C-SSV4500LL	Screw
70D	1494708	70D-SSVI2500LL	Spring
71	1494772	71-SSVI6500LL	O-Ring
72	1494773	72-SSVI6500LL	Switch Cam
74	1494774	74-SSVI6500LL	Cam Gear
74B	1494775	74B-SSVI6500LL	Spring
74E	1494776	74E-SSVI6500LL	Spring
74F	1494777	74F-SSVI6500LL	Spring
74G	1277014	74G-SSV4500LL	Live Liner Three Pawl Lever E-Clip
76	1494778	76-SSVI6500LL	Spring
77	1494779	77-SSVI6500LL	Stop Claw
77A	1494780	77A-SSVI6500LL	Plate
77B	1289972	77B-SSV4500LL	Screw
83	1494781	83-SSVI6500LL	Ratchet
83B	1494782	83B-SSVI6500LL	Support Assembly
85	1494783	85-SSVI6500LL	Friction Washer
85B	1494784	85B-SVI6500LL	Eared Washer
86	1494785	86-SSVI6500LL	Spring
86A	1494786	86A-SSVI6500LL	Nut
88	1611030	88-SSVII6500LL	Knob
88D	1494788	88D-SSVI6500LL	Retainer
88E	1494789	88E-SSVI6500LL	O-Ring
95B	1419009	95B-SLA3500	Rotor Nut Locking Plate
98	1277094	98-SSV5500	One Way Clutch Bearing Assembly
132	1457405	132-SLAI116500HS	Line Roller Collar
226B	1494790	226B-SSVI6500LL	Seal
231	1389600	231-CLA6000	O/S Gear
231A	1339566	231A-CLA5000	O/S Gear Bushing
231B	1277100	231B-SSV5500	O/S Gear Screw
231C	1389603	231C-CLA6000	O/S Gear Washer
233A	1419075	233A-SLA5500	Handle Cap Assembly
233C	1419076	233C-SLA5500	Handle Cap Seal

KEY NO.	PART NO.	PENN STYLE NO.	DESCRIPTION
1	1611025	1-SSVI16500LL	Body Assembly
1D	1277140	1D-SSV7500	A/R Pawl Post
1F	1419019	1F-SLA5500	Body Side Seal
1G	1419020	1G-SLA5500	Body Side Seal Lock Plate
1H	1418957	1H-SLA3500	Body Side Screw
2L	1494746	2L-SSVI6500LL	Body Seal
4	1389459	4-CLA6000	A/R Pawl
5	1339474	5-CLA5000	Pawl Spring
6	1277144	6-SSV7500	Retainer Clip
8	1494747	8-SSVI6500LL	Drive Gear Assembly
8A	1277037	8A-SSV5500	Drive Gear Shim Washer
10	1419936	10-CLA6000	A/R Pawl Holder
11	1419028	11-SLA5500	A/R Bushing
12	1339487	12-CLA5000	A/R Bushing Spring
14	1276992	14-SSV6500LL	O/S Slider Retainer Screw
15	1494748	15-SSVI6500LL	Handle Assembly
15E	1494749	15E-SSVI6500LL	Handle Knob

KEY NO.	PART NO.	PENN STYLE NO.	DESCRIPTION
15P	1494750	15P-SSVI6500LL	Sub-Handle Assembly
19	1494751	19-SSVI6500LL	Pinion Gear
19C	1419023	19C-SLA5500	Pinion Gear Bushing
20	1308090	20-CFT5000	Ball Bearing
21	1419025	21-SLA5500	Ball Bearing Retainer
21A	1277154	21A-SSV7500	Screw
21B	1419024	21B-SLA5500	Pinion Bearing Collar
21C	1385684	21C-CLA8000	O Ring
22	1276928	22-SSV3500	Rotor Cover Screw
24	1494752	24-SSVI6500LL	Bai Assembly
24C	1494753	24C-SSVI6500LL	Handle Knob Cap
25	1339500	25-CLA5000	Bail Holder
27	1494754	27-SSVI6500LL	Rotor
27A	1494755	27A-SSVI6500LL	Rotor Cover
28	1494756	28-SSVI6500LL	Rotor Trip Lever
28D	1447674	28D-SLAI116500H	Rotor Brake
28S	1277063	38A-SSV55000	Screw

407-SSVII6500LL
Rev. 00 05-08-2023

1594611 SSVII65LL-US
1612610 SSVII65LL-EU